

National Disaster Relief and Recovery Information Platform

www.drrportal.gov.np



On 25 April, Nepal experienced a massive 7.8 magnitude earthquake with the epicentre in Gorkha District, 77 kilometres northwest of Kathmandu. The earthquake, and its many aftershocks, have affected 39 of Nepal's 75 districts, with fourteen districts identified as most affected. Over 8,700 people have lost their lives, and more than 22,000 have been injured. The earthquake and its aftershocks – including a 7.3 magnitude tremor on 12 May with the epicentre along the border of Sindhupalchowk and Dolakha districts – have left hundreds of thousands of people homeless and affected the livelihoods of people across the country. Some 50,000 classrooms in 8,000 schools and around 1,000 health facilities were also damaged by the earthquake.



National Disaster Relief and Recovery Information Platform

The Ministry of Home Affairs (MoHA), Government of Nepal, in close collaboration with the International Centre for Integrated Mountain Development (ICIMOD) and with technical support from the Environmental System Research Institute (ESRI), has developed and deployed the Nepal Earthquake 2015: National Disaster Relief and Recovery Information Platform (NDRRIP). The NDRRIP acts as a unified hub for earthquake-related information for use by government ministries and departments and other stakeholders engaged in disaster recovery and reconstruction.

Objectives

- Timely, credible, and actionable data and information for earthquake relief and recovery operations
- Streamlined information from multiple actors and sources
- Decision support for effective coordination of rehabilitation and reconstruction efforts



Nepal Earthquake 2015 Disaster Relief and Recovery Information Platform



Country Profile

[View](#)



District Profile

[View](#)



Municipality Profile

[View](#)



VDC Profile

[View](#)



Health

[View](#)



Education

[View](#)



Heritage

[View](#)



Landslide Assessment

[View](#)



Geo-Hazard

[View](#)



Infrastructure

[View](#)



Agriculture/Livestock

[View](#)



Culture/Tourism

[View](#)

Key Features

- Key facts and figures at national, district, and VDC/municipality levels with interactive maps, charts, and infographics
- Facts and figures under different thematic areas such as infrastructure, health, education, cultural heritage, agriculture, and geohazards
- Interactive before and after visualizations using high resolution satellite imagery
- Story map journals for each affected district and selected themes providing the status of casualties, damage, and response efforts
- Information on geohazards, including field data on landslides with 3D visualization
- Incident reporting for disaster events in near real-time

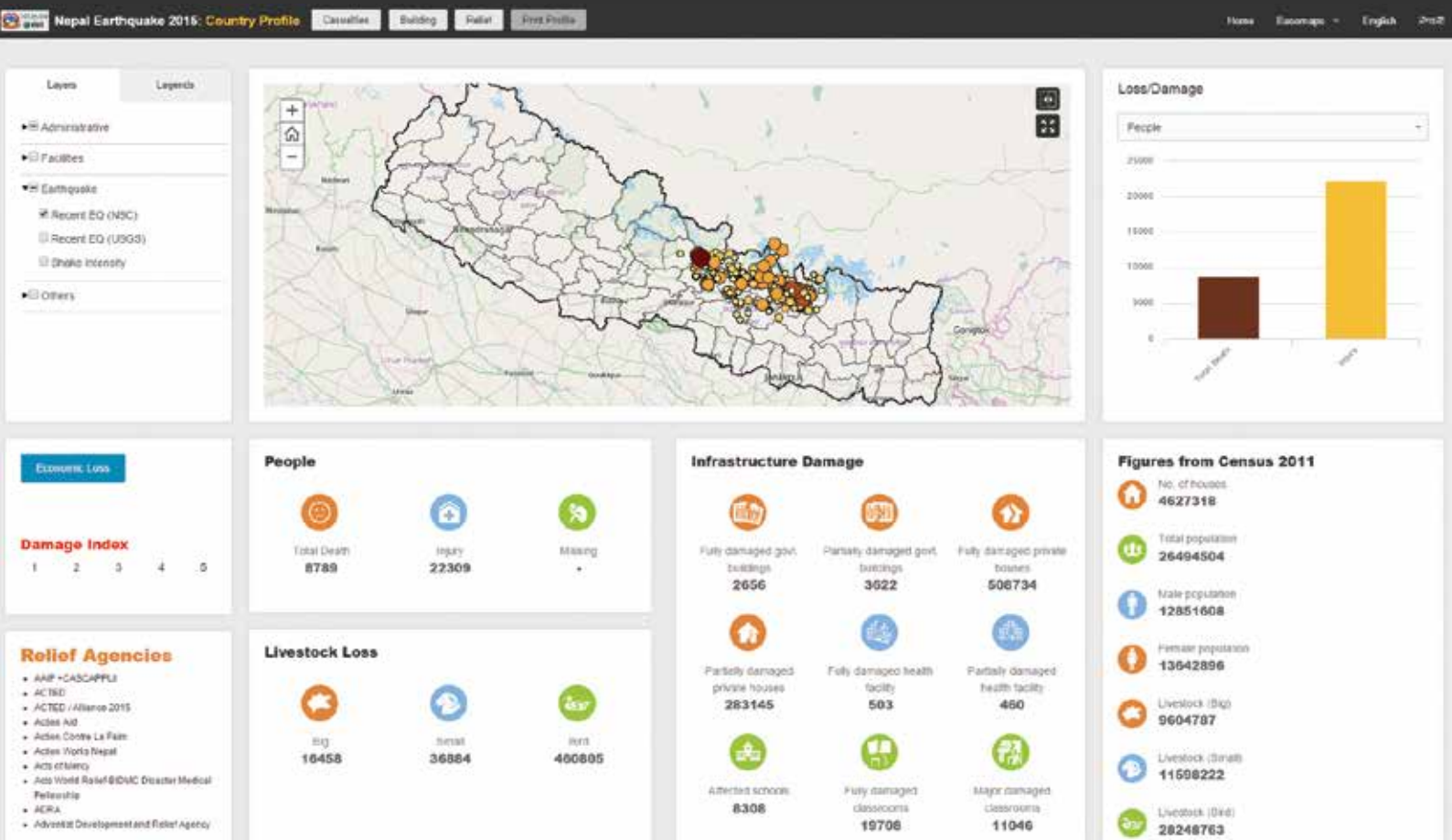


Pre Earthquake

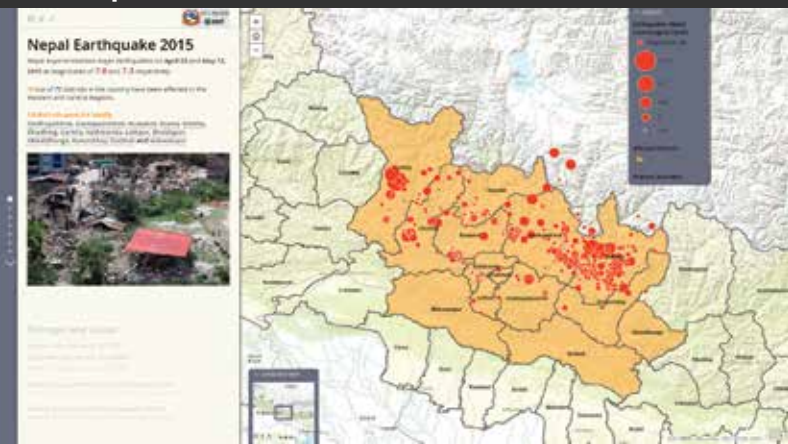


Post Earthquake

Country Profile



Map Journal



For further information contact

Ministry of Home Affairs, National Emergency Operation Centre
 Government of Nepal, Singha Durbar, Kathmandu, Nepal
 Tel: (977) 1 4200203

Baburam Bhandari

International Centre for Integrated Mountain Development
 GPO Box 3226, Kathmandu, Khumaltar, Lalitpur, Nepal
 Tel: (977) 1 5003222

Basanta Shrestha

basanta.shrestha@icimod.org